



2008 Cheoy Lee 80' Bravo

2008 Cheoy Lee

80' (24.38m) Bravo -

"Bella Sophia" is offered for sale as comparably one of the nicest Cheoy Lee yachts in her size and era available on the market today. She has been well maintained throughout her life, and has recently benefited from a flurry of updates.

🇺🇸 Flag of Registry: United States

\$
1,749,000
USD
€ 1,549,453
Euros
\$ 2,212,663
CAD
£ 1,301,123
GBP

✉ *EMAIL BROKER*

Lighthouse Point Florida United States

Motor Yachts

Power

Used

Diesel

Fiberglass Hull

Vessel ID# 2784686 Last Updated: 2021-11-19 16:23:08

☎ 1-561-568-26

(SMS://1-561-56



(<https://vessel.iyba.prc for-sale/40000061/?id=80932&vessel=278ft-cheoy-lee-2008-bravo-lighthouse-point-yacht-for-sale&lang=en>)



(<https://vessel.iyba.prc for-sale/40000061/?id=80932&vessel=278ft-cheoy-lee-2008-bravo-lighthouse-point-yacht-for-sale&lang=es>)



(<https://vessel.iyba.prc for-sale/40000061/?id=80932&vessel=278ft-cheoy-lee-2008-bravo-lighthouse-point-yacht-for-sale&lang=fr>)

Contact Us

Data Sheet

LOA: 80' " (24.38 Meters)
Type: Power - Used
Year: 2008

Fuel Type: Diesel
Hull Material: Fiberglass

Fuel Tank: 2750 Gallons
(10409.88 Liters)
Fresh Water: 532 Gallons
(2013.84 Liters)

Beam: 20' 2"
Draft Max: 5' 5"
Cabins: 3
Heads: 3

1201507 Liters,
Holding Tank: 320 Gallons
(1211.33 Liters)
Displacement: 133800

Photos [click to view all](#)



(<https://media.iyba.pro/images/27841686/media/1547143.jpg>)



(<https://media.iyba.pro/images/27841686/media/18374839.jpg>)



(<https://media.iyba.pro/images/27841686/media/18374839.jpg>)



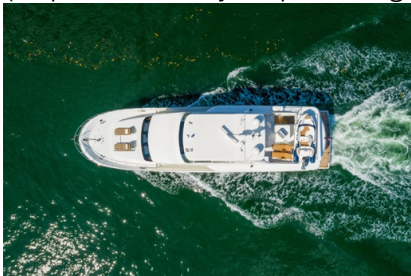
(<https://media.iyba.pro/images/27841686/media/18374839.jpg>)



(<https://media.iyba.pro/images/27841686/media/18374839.jpg>)



(<https://media.iyba.pro/images/27841686/media/18374839.jpg>)



(<https://media.iyba.pro/images/27841686/media/18374839.jpg>)



(<https://media.iyba.pro/images/27841686/media/18374839.jpg>)



(<https://media.iyba.pro/images/27841686/media/18374839.jpg>)



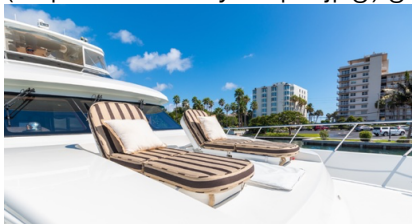
(<https://media.iyba.pro/images/27841686/media/18374839.jpg>)



(<https://media.iyba.pro/images/27841686/media/18374839.jpg>)



(<https://media.iyba.pro/images/27841686/media/18374839.jpg>)



A view from the deck of a boat looking out over a marina. In the foreground, there are three brown leather bar stools and a white bar counter with a wooden top. A bottle of beer sits on the counter. The background shows a large body of water with many boats and a lush green shoreline under a blue sky with some clouds.

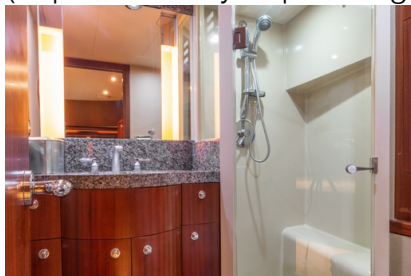
(https://media.ivha.nro/images/2781669/made-for-3d-images/2781669/made-for-3d-images/2



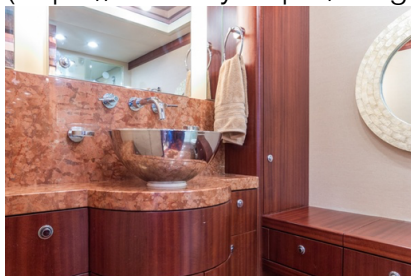
(<https://media.iyba.pro/images/2784636/meda14a.34.jpg>) (<https://media.iyba.pro/images/2784636/meda14a.35.jpg>) (<https://media.iyba.pro/images/2784636/meda14a.36.jpg>)



(<https://media.iyba.pro/images/2784636/meda14a.37.jpg>) (<https://media.iyba.pro/images/2784636/meda14a.38.jpg>) (<https://media.iyba.pro/images/2784636/meda14a.39.jpg>)



(<https://media.iyba.pro/images/2784636/meda14a.40.jpg>) (<https://media.iyba.pro/images/2784636/meda14a.41.jpg>) (<https://media.iyba.pro/images/2784636/meda14a.42.jpg>)



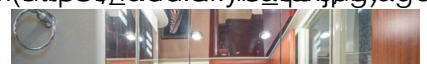
(<https://media.iyba.pro/images/2784636/meda14a.43.jpg>) (<https://media.iyba.pro/images/2784636/meda14a.44.jpg>) (<https://media.iyba.pro/images/2784636/meda14a.45.jpg>)



(<https://media.iyba.pro/images/2784636/meda14a.46.jpg>) (<https://media.iyba.pro/images/2784636/meda14a.47.jpg>) (<https://media.iyba.pro/images/2784636/meda14a.48.jpg>)



(<https://media.iyba.pro/images/2784636/meda14a.49.jpg>) (<https://media.iyba.pro/images/2784636/meda14a.50.jpg>) (<https://media.iyba.pro/images/2784636/meda14a.51.jpg>)





(<https://media.iyba.pro/images/27841636/media/197a.52.jpg>) (<https://media.iyba.pro/images/27841636/media/197a.53.jpg>) (<https://media.iyba.pro/images/27841636/media/197a.54.jpg>)



(<https://media.iyba.pro/images/27841636/media/197a.55.jpg>) (<https://media.iyba.pro/images/27841636/media/197a.56.jpg>) (<https://media.iyba.pro/images/27841636/media/197a.57.jpg>)



(<https://media.iyba.pro/images/27841636/media/197a.58.jpg>) (<https://media.iyba.pro/images/27841636/media/197a.59.jpg>) (<https://media.iyba.pro/images/27841636/media/197a.60.jpg>)



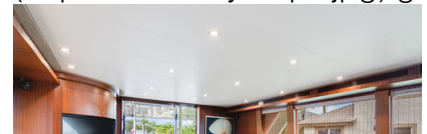
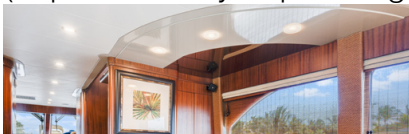
(<https://media.iyba.pro/images/27841636/media/197a.61.jpg>) (<https://media.iyba.pro/images/27841636/media/197a.62.jpg>) (<https://media.iyba.pro/images/27841636/media/197a.63.jpg>)



(<https://media.iyba.pro/images/27841636/media/197a.64.jpg>) (<https://media.iyba.pro/images/27841636/media/197a.65.jpg>) (<https://media.iyba.pro/images/27841636/media/197a.66.jpg>)



(<https://media.iyba.pro/images/27841636/media/197a.67.jpg>) (<https://media.iyba.pro/images/27841636/media/197a.68.jpg>) (<https://media.iyba.pro/images/27841636/media/197a.69.jpg>)





(https://media.iyba.pro/images/27841686/273597fb_70.jpg) (https://media.iyba.pro/images/27841686/6405419b_71.jpg)



(https://media.iyba.pro/images/27841686/273597fb_73.jpg) (https://media.iyba.pro/images/27841686/6548449a_74.jpg)



(https://media.iyba.pro/images/27841686/1973597fb_76.jpg) (https://media.iyba.pro/images/27841686/25904b4a_77.jpg)

Multimedia

80' Cheoy Lee "Bella Sophia"

80' Cheoy Lee "Bella Sophia" ...





Engines

Engine 1

- Engine Make: Caterpillar
- Engine Model: 3412E
- Engine Year: 2008
- Power HP: 1400.00
- Hours: 3454.00

Engine 2

- Engine Make: Caterpillar
- Engine Model: 3412E
- Engine Year: 2011
- Power HP: 1400.00
- Hours: 1398.00

Full Details

Vessel Overview

Description:

"Bella Sophia" is offered for sale as comparably one of the nicest Cheoy Lee yachts in her size and era available on the market today. She has been well maintained throughout her life, and has recently benefited from a flurry of updates. The list of recent upgrades include, but is not limited to: New headliners and lighting throughout, Maretron Ships monitoring system, Garmin GPS, multifunction depth/speed, FLIR system, upgraded entertainment systems, tender, and renewed exhaust system.

Beyond these updates "Bella Sophia" features the exceptional fit & finish, and sea-keeping ability that Cheoy Lee is known for. Notably, "Bella Sophia" is the only Bravo Series yacht that was built with three full-beam staterooms, any of which could pass for the master. However, it tends to be her flybridge that garners the most attention. Not only is it the largest in its class, the flybridge boasts air conditioning, a welcoming bar, extra freezer space, and teak decks. You'll also find the yacht's new tender here.

- Recent Work / Upgrades:
- New headliners throughout vessel (11/2021)

- New lighting throughout vessel (11/2021)
- New Maretron Vessel monitoring System (3/2019)
- New iPhone / iPad vessel monitor (Maretron) (3/2019)
- New Exhaust and Engine Room Temp Sensors (3/2019)
- Davit rebuilt and upgraded (Nautical Structures) (4/2019)
- FLIR Rebuilt by FLIR (4/2019)
- Tender Steering Cable Replaced (Warranty) (4/2019)
- Tender Yamaha Outboard Serviced (4/2019)
- New Crew Refrigerator (6/2019)
- Serviced flybridge Ice Maker (6/2019)
- New flybridge Beverage Fridge (6/2019)
- New flybridge Chest Freezer (6/2019)
- All Teak sanded and caulked where needed (10/2019)
- New Dishwasher (6/2018)
- New AC Chiller Drives (8/2018)
- New AC Raw water pump (8/2018)
- AC Chillers serviced (8/2018)
- New FB Amp and Speakers (8/2018)
- Galley Refrigerator Serviced and New Boards (9/2018)
- New Ships Service / Engine Start Batteries (Dekka) (10/2018)
- New Electronics 12v/24v Batteries (Odyssey) (11/2018)
- New Exhaust Spray rings, gaskets and seals Port and Stbd. (12/2018)
- New Exhaust Blankets (12/2018)

Walkthrough:

When it comes to fit, finish, and outfitting, few builders can compete with Cheoy Lee Yachts in the 75' to 100' range - and almost none rivals their seakeeping ability, and the dry, quiet ride. Yet even with these high standards, "Bella Sophia", a 2008 80' Cheoy Lee Bravo Series, rises above.

There is much that is remarkable about "Bella Sophia". She is the only Bravo Series yacht that was built with three full-beam staterooms, any one of which could pass for the Master. The actual Master Stateroom is midship, and accessible via a private spiral staircase. The guest quarters are a wonderful complement to the yacht's tastefully-done decor, notable for its stone and granite accents.

Despite all of the many extraordinary aspects of Bella Sophia's interior, it tends to be her flybridge that garners the most attention. Not only is it the largest in its class, the flybridge boasts air conditioning, a welcoming bar, extra freezer space, and teak decks. You'll also find the yacht's new tender here.

The updates on Bella Sophia have been meticulously conceived, masterfully-carried out, and continuous. The list of recent upgrades include, but is not limited to: New headliners and lighting

continuous. The list of recent upgrades include, but is not limited to. New headlamps and lighting throughout, Maretron Ships monitoring system, Garmin GPS, multifunction depth/speed, FLIR system, upgraded entertainment systems, tender, and renewed exhaust system.

All updates to “Bella Sophia” have been buttressed by continued excellent maintenance and a concerted, no-resources-spared effort to keep this yacht in the “super clean” state that she has enjoyed throughout her existence. Whether in Italian or English, or any other language, “Bella Sophia” is indeed beautiful in every respect.

Accommodations:

BELLA SOPHIA features three spacious staterooms. The private Master Stateroom is full beam and amidship, featuring a king-sized berth with his-and-hers head. The two additional staterooms onboard feature queen sized berths, both spanning the full beam of the yacht. The main deck can be considered as two distinct living areas. The aft of the main deck features the salon and dining area which are complemented with ample seating, wet bar, and entertainment center. Forward is the country style kitchen and pilot house. This area is complemented by a dinette and convenient day head.

Her aft deck includes upholstered bench seating with dining table, wet bar and stairwell up to flybridge. The spacious flybridge is equipped with ample sun lounge areas, dining tables, teak lounge chairs, wet bar, BBQ grill & enclosed with eisenglass.

Main Salon:

The main salon is accessed from the aft deck through the stainless steel, tempered glass sliding door. There is ample seating with custom upholstered curved sofas to port and starboard. The entertainment center is a corner unit equipped with state of the art surround sound audio and visual equipment. Forward to port is a formal round dining table with six dining chairs, a full wet bar with bar stools to starboard. Continuing forward is the circular staircase that leads up to the flybridge and down to staterooms.

- Natura Tweed upholstered curved sofas, port & stbd
- Custom Sapele wood interior w/satin finish throughout
- Upholstered reclining club chair
- Round expandable glass top cocktail table
- Built-in entertainment center w/LG 42" HD TV, Samsung Blue Ray DVD player, Denon ACR X 4000 receiver, Direct TV, KVH TracVision HD7 & 6speakers
- ED overhead lighting throughout main deck (new 2015)
- Custom built-in buffet cabinets in dining area w/ lofted storage
- Lutron lighting w/control/dimmer switches
- Custom roman shades
- Custom upholstered mullions & columns
- Sapele wood round dining table w/ custom leather inlay & dining chairs
- Custom 4' high china cabinet on forward bulkhead w/ custom faux finish & touch latch • cabinet doors
- Hardwood flooring in dining area w/custom designed carpet under table
- Wet bar w/granite top, Indel black refrigerator, liquor/bottle storage & accent lighting on front panel

- (2) Leather bar stools w/ stainless steel pedestal base
- Valance lighting and accent floor lighting
- The dayhead is located forward to starboard in the galley area

Galley:

Huge walk in country kitchen with dining area forward and panoramic windows

- GE Monogram stainless steel refrigerator
- GE Dishwasher w/custom fascia panel (New 2018)
- GE Monogram cooktop & stainless-steel oven
- GE Monogram microwave w/ventilation hood
- KitchenAid Trash compactor (new 2014)
- Double stainless-steel sinks w/Grohe goose neck faucet Kenmore disposal
- Custom granite counter tops & backsplash w/raised granite serving counter
- Raised dinette w/custom leather upholstered settee & Sapale wood table w/stainless steel pedestal
- Double stainless-steel sinks w/custom Grohe gooseneck faucet
- Freshwater RO filtration system Frake Insta hot water system
- Overhead speaker's w/audio control Custom hardwood floor
- Dayhead located outboard on starboard side

Master Stateroom:

The full beam master stateroom is accessed through a private spiral staircase leading into a foyer mid-ship.

- King berth, custom upholstered headboard & bulkhead w/art canvas
- (2) Nightstands & reading lights above
- Custom leather wall panels above nightstands & soffit
- Built in dresser & cabinets
- Vanity w/bench & decorative mirror
- Custom leather inlay on vanity/desktop
- Custom upholstered settee
- Built-in surround sound entertainment center w/new LG 4K TV, Marantz surround sound receiver, Samsung Blue Ray DVD, Direct TV receiver & Polk Audio Sirius FM
- (2) Cedar lined closets w/extensive drawer & storage space
- Custom Roman window shades
- Custom entry & door hardware
- (4) Custom fixed windows
- Valance & accent floor lighting
- Mirror on closet door
- Safe in master closet

En-Suite His & Her Master Bath:

- Custom granite vanity top & back splashes
- Custom stainless-steel sinks & faucets
- Custom marble shower w/decorative glass doors & fixtures
- Vanity w/custom mirrors, upholstered bench
- (2) Headhunter freshwater flush heads
- Custom wallcoverings
- Custom stone tile flooring
- Full height, concealed watertight door accessing walkthrough engine room / emergency exit

VIP Midship Stateroom:

This massive stateroom could easily be confused with the master room featuring:

- Queen Island berth with custom headboard with storage
- Custom soffitt w/lighting above bed
- Custom upholstered bulkhead behind bed
- (2) Built-in nightstands, 2 reading lights Built-in dresser, vanity/desktop & stool
- Custom leather inlay on desktop
- Custom upholstered settee
- Custom Roman window shades
- Custom entry & closet door hardware
- Entertainment center w/Vizio 28" TV, JVC DVD, stereo & Direct TV
- Cedar lined closet w/mirror on door
- Valance & accent floor lighting
- (4) Custom fixed portlights
- Three cedar lined closets
- En-Suite Private bath w/custom vanity w/granite top & back splashes
- Stall shower w/custom marble center panel on wall
- Custom granite vanity tops & back splashes
- Custom faucet, fixtures & door hardware
- Custom wallcovering
- Headhunter freshwater head
- Custom stone tile floor

VIP Forward Stateroom:

- Queen Island berth with custom headboard with storage
- Custom soffit w/lighting above bed
- Custom upholstered bulkhead behind bed
- (2) Built-in nightstands, 2 reading lights
- Custom Roman window shades
- Custom entry & closet door hardware

- Entertainment center w/Vizio 28" TV, JVC DVD, stereo & Direct TV
- Cedar lined closet w/mirror on door
- Valance & accent floor lighting
- (2) Portlights
- Stainless steel framed ventilation/escape hatch w/shade
- En-Suite Private bath w/custom vanity w/granite top & back splashes
- Stall shower w/custom marble center panel on wall
- Custom faucet, fixtures & door hardware
- Custom wallcovering
- Headhunter freshwater head
- Custom stone tile floor

Crew Quarters:

- Oversized angled upper & lower berths
- Crew lounge w/upholstered settee
- Avonite tabletop & counter
- GE stainless steel refrigerator
- Sharp stainless-steel microwave oven
- Avonite countertop w/sink, overhead lights & Ambassador faucets
- Vizio 24" TV, DVD & satellite receiver
- Furuno TX touch Nav Net
- Cedar lined hanging lockers
- Custom entry & closet door hardware LED lighting w/control switch
- (2) Reading lights Custom wallcovering
- Crew head

Pilothouse:

- Custom leather helm chair
- Custom Majilite helm console & hood
- Custom hardwood floor
- Engine instrumentation & alarms
- Remote control for anchor windlass & searchlight
- Stainless steel custom steering wheel
- Programmable Logic control panel
- (2) Red night lights & switch Teleflex/hynautic hydraulic power steering
- Electronic engine controls
- Remote start/stop for main engines
- Instrument & electronics console
- Windshield defroster & wipers w/freshwater wash system
- Weathertight fiberglass pantograph door to starboard side deck

Electronics and Nav equipment:

- (2) Furuno Nav Net 3D black box Radars (2013) (pilothouse & bridge) Furuno DRS 12 Digital radar (2013)
- 3 KEP monitors on Flybridge
- 2 KEP monitors in pilothouse
- Furuno DFF-1 depth sounder
- New Garmin 7608 GPS (2017)
- Furuno GPS/plotter (pilothouse & bridge)
- (2) Furuno GP37 GPS (pilothouse & bridge) Furuno Navpilot 500 Autopilot (pilothouse) • Furuno Autopilot 2nd station (bridge) Furuno SC 30 Satellite compass (2013) Furuno • Class B AIS transponder (2013)
- (2) Icom 604 VHF's w/hailer (pilothouse & bridge)
- (2) B&G speed & depth sounder (pilothouse & bridge)
- (2) KEP 15" monitors (pilothouse)
- KEP 5.6 color monitor control (pilothouse)
- KEP SunBright 17" monitors (bridge) New FLIR system (2017)
- New Multifunction depth/speed (2017)
- Nobletec /Max Sea fully integrated navigational PC w/sounder & radar package (2013)
- Yacht controller remote system (2013)
- Tracvision HD7 satellite system
- Lenova i7 computer (2013)
- Cellular phone
- Axis pan/tilt/zoom IP CCTV monitor/cameras for aft deck & engine room (updated 2014)
- Panasonic Phone System
- Maetron ships monitoring system with Ipad and remote access
- Cradle Point cellular and wifi receiver
- WIFI router
- Sirius XM radio and weather

Audio/Video Systems

Upgraded 2014:

- 1080P TV's Direct TV, Genie DVR
- All Direct TV receivers can access DVR KVH HD7 Tracvision
- Denon AVR X4000 controlling aft deck, salon and galley sound systems
- Apple TV
- Samsung Blue Ray
- Boston 5.1 Surround system Harmon one touch unified remote
- Ship remote Wifi system local network
- Portable TV w hook up on Aft Deck and Flybridge

- Cat 5 cable throughout
- Harmony remote control
- XM weather receiver

Flybridge:

- Full helm station w/electronic console Stidd captain helm seat (new 2014) Stidd double • helm seat (new 2014)
- Electronic engine controls w/remote plugin station & Yacht Controller
- Hynautic hydraulic power steering
- Engine instrumentation & alarms
- Stainless steel steering wheel
- ACR 100 quarts halogen searchlight, remote dual station controls
- Full EZ2CY enclosure (new 2014)
- (3) Hard glass removable forward panels
- Acrylic windscreen (new 2014)
- Upholstered Lshaped seating w/storage below
- Granite tabletop w/stainless steel pedestals
- Bar w/granite top, sink, Uline refrigerator, icemaker & freezer
- Bar stools w/stainless steel pedestals Island cabinet w/storage lockers
- Fusion stereo system with Wetsounds speakers controllable by phone or Garmin
- (2) Teak lounge chairs w/cushions & headrests Fire Magic 24" custom gourmet BBQ grill
- Stainless steel & tempered glass sliding hatch covering staircase to salon
- Stainless steel rails around hatch/ladder to aft deck
- AIS Class B
- Twin trumpet air horn
- Offshore 8 man life raft w/chocks & hydrostatic release
- Hatch & steps to aft deck w/stainless steel rails & gate
- Teak decking under hardtop area
- Nautical Structures hydraulic 1700lb davit w/power rotation
- 2017 Avon 14' RIB w 60HP Yamaha. Serviced 4/2019

Aft Deck:

The spacious open aft deck has a dining table and wet bar. Twin stairs lead down to the transom platform which makes boarding from dock or tender safe and easy.

- Upholstered bench seating w/storage below
- Custom hi-lo teak table (separated in 2) w/stainless steel angled pedestal
- Bar cabinet w/granite countertop & Uline refrigerator
- Freshwater wash down hose bib
- (2) JL Audio overhead stereo speakers
- Overhead lighting
- Dual stairways w/teak steps, stainless handrails, down to swim platform, port & stbd pan, tilt, zoom

- Dual stairways w/teak steps, stainless handrails, down to swim platform, port & stbd part, tilt, zoom
CCTV camera

- Stainless Swim Ladder
- Stainless steel u-shaped rails
- Freshwater shower (hot & cold)
- Adhesion style teak sport deck steps & swim platform
- Locker for shore services, shore power, TV & phone inlets
- Hinged cleats port & stbd (not for towing)
- Storage locker w/ watertight door
- Watertight door to crew quarters

Deck Equipment:

- (2) Builtin reclining lounge sunpads w/cushions, located on bow
- Maxwell 4000lb anchor windlass w/ 3/8" chain
- Walkway and step lighting on side decks & steps
- Freshwater washdown
- Twin trumpet air horn
- (8) Stainless steel bollards
- Stainless steel fairleads
- Stainless steel rails 1.25" w/mid rail forward
- Stainless-steel burgee flag staff on bow
- Navigation lights
- Boarding gates, port & stbd
- Step plates located at deck entrances
- Scuppers draining to boot top
- New bottom job & servicing at American Shipyard (9/17)

Electrical Equipment:

- Twin Northern Lights 30KW generators w/sound guards (Port: 4267 hrs/ Std: 4235 hrs) • Isolation transformer
- Glendinning cablemaster shore power cable system w/100' cable LCD touch screen control/alarm monitoring system
- 220/110v, 60Hz AC & 24/12vDC electrical panels
- (2) 24v DC 210 amp hour battery banks for engine starting & ship service Battery parallel system at both helm stations
- 24v DC 60 amp battery charger
- (2) 12v DC 175 amp hour battery banks for generator starting 12v DC 20 amp battery charger
- Vanner 50 amp 2v DC equalizer w/12v DC 120 amp hour battery
- Cat 5 cable throughout

Engine / Mechanical Equipment

- Twin Caterpillar 3412E 2800HP diesel engines, freshwater cooled, electronic injection/governor, reduction gearboxes, 24v DC starting
- Starboard Caterpillar engine completely replaced (new 2011) 1369 hours
- Port Caterpillar engine overhauled (2011) 3425 hours
- Local mounted start/stop instrument panels for main engines & generators
- Underwater exhausts w/bypass & fiberglass mufflers
- (2) New 5 ton chillers w/frequency drives (2015)
- Centek combo generator mufflers, air/water separator type w/hull side exhaust
- Engineered ventilating system w/intake blowers taking air in via air/water separator filters
- Fireboy fire protection system, automatically actuated fire extinguisher system w/ audio & visual alarms
- Naiad 12", 32 HP hydraulic bow thruster driven from Live C Pad
- Datum Naiad stabilizer system w/7.5' fins & dual station control
- SK 1200 GPD watermaker
- Power hydraulic steering system
- Engine driven emergency bilge pumping system for engine room bilges
- Lube oil change system manifold & hoses to engines & gearboxes
- Racor fuel filters w/vacuum gauges for main engines
- Racor filters w/vacuum gauges for generators
- (2) 30-gallon water heaters, dual element, quick recovery type
- (2) Headhunter Mach 5 waterpump & accumulator tank for freshwater system
- Cartridge style whole system water filter unit
- Fresh water hose bib
- Automatic sump pumps
- Automatic bilge pumps for each separate compartment in vessel
- Fuel management system, consisting of fuel shutoff valves, fuel transfer pump with meter system & selector manifold
- Hart tank tender gauges for fuel, freshwater, black water & grey water tanks, pneumatic pump type
- Black water tank level indicator & high level alarm
- Black water holding tank system
- Macerator pump for pump out of holding tank direct overboard, or to vented deck fitting for shore side disposal
- Bronze raw water strainers for all engines & sea water pump intakes
- Seacocks on all through hull fittings below the waterline
- Battery condition indicator
- Engineered sound vibration & noise attenuation system for engine room spaces consisting of lead tile sound barriers and Mylar faced synthetic lead foam insulation covered with white painted aluminum perforated sheeting.
- Custom sound mounts for main engines, generators, engine room stanchions, head pumps/motors, air conditioning compressors and sea water cooling pumps
- Drip trays under engines

- Seashaft 22 or equal propeller shafts Stainless steel rudder blades
- Nibral propeller shaft struts
- Nibral 40x41 propellers, 5 blade, class S, dynamically balanced
- Durumas cutlass rubber stern and rudder bearings
- PYI packless shaft seals
- Automatic 24v DC emergency lights
- Smoke detectors
- Watertight entrance door from aft swim step to crew area
- Watertight emergency escape hatch from engine room to master stateroom Underwater lights
- Fire extinguishers located in all staterooms, galley, pilothouse and flybridge. Automatic fire suppression system in engine room

CONTACT US /

For more information about this yacht please contact
Nicholas Scherb.

We look forward to working with you!



26 North Yachts

2525 Marina Bay Drive West
Suite 203A
Fort Lauderdale FL 33312 USA
Phone: 1-954-900-9988 (tel:1-954-900-9988)
Fax: 1-954-206-3075 (tel:1-954-206-3075)
Email: info@26northyachts.com
(<mailto:info@26northyachts.com>)
Website:
<https://www.26northyachts.com>
(<https://www.26northyachts.com>)



Nicholas Scherb

Yacht Sales

2525 Marina Bay Drive West
Fort Lauderdale FL 33312 USA
Office: 1-954-900-9988 (tel:1-954-900-9988)
Fax: 1-954-206-3075 (tel:1-954-206-3075)
Cell: 1-561-568-2600 (tel:1-561-568-2600)
Email:
nicholas@26northyachts.com
(<mailto:nicholas@26northyachts.com>)

We're the most admired boutique brokerage house in North America. We engage aggressive goals and implement innovative, yet disruptive marketing strategies that create a powerful platform for buyers and sellers of motoryachts in the 70' to 140' range.



(<https://www.facebook.com/26NorthYachts>)



(<https://twitter.com/26NorthYachts>)



(<https://www.youtube.com/user/26NorthYachts>)



(<https://www.linkedin.com/company/26-north-yachts>)



(<https://www.instagram.com/26northyachts>)

After graduating from Indiana University, with a degree in finance, he pursued a career as a yacht captain obtaining a USCG 500 ton master oceans license. Nicholas's worldwide travels and years on-board has given him a vast understanding of the world's different shipyards, yacht systems, the interworking of shipyards, managing sub-contractors and crew. In addition to his yachting experience, his finance and business background allows him to have a leading role in 26 North Yacht's marketing campaigns using the latest in web technology, social media and digital videos.



(<https://www.facebook.com/26North>)



(<https://twitter.com/26NorthYachts>)



(<https://www.youtube.com/user/26NorthYachts>)



(<https://www.linkedin.com/company/26-north-yachts/>)



(<https://www.instagram.com/26northyachts>)

SCROLL TO TOP